

Code: H49

- Product Name: **Biopsy Specimen Container**
- Type: **SafeCell**
- Capacity: 10ml
- Packaging: 20 bottle/box.
- Formalin Concentration: 10%
- Circulation Number: 250001170/PCBA-HCM

SPECIMEN BIOPSY CONTAINER - NEW GENERATION

Innovative Design

Closed system technology - Safe - Innovative.

Aiming for accurate safety in in vitro diagnosis

Minimize risk to Doctors and Nurses.

Comprehensive solution

Optimized for the process of collecting, transporting and preserving biopsy samples.

**➔ IT'S TIME TO CHANGE
THE TRADITIONAL WAY
OF STORING SAMPLES!**

**DIAGNOSIS F BIOTECHNOLOGY
PRODUCTION COMPANY LIMITED**

Contact information:

(+84) 28 71098734

📍 5th Floor, Factory no.2, Lot I-3b-1, N6 Street, Sai Gon
Hi-Tech Park, Tan Phu Ward, Thu Duc City, Ho Chi Minh
City, Vietnam.

🌐 www.dfu.com.vn

📱 @DFU



SafeCell biopsy container

*Improve safety and protect the
health of healthcare workers by
minimizing the risk of direct
exposure to formalin.*

● Scan the code to view the user manual:

📞 (+84) 28 71098734

🌐 www.dfu.com.vn



WHY CHOOSE SafeCell?

ALARMING FACTS:

- ✖ The World Health Organization (WHO) classifies formaldehyde as a group 1 carcinogen (sufficient evidence on humans).
- 🇻🇳 According to the Vietnamese Ministry of Health (2023): Laboratory workers exposed to formaldehyde >4 hours/day have symptoms of dermatitis and respiratory failure.
- 💀 Just 10ppm of formaldehyde in the air is enough to cause suffocation and damage the retina.

POTENTIAL RISKS

- Inhalation of toxic fumes: Evaporates through the lid gap → Increases the risk of nasopharyngeal cancer, leukemia..
- Skin contact: Leakage of solution → Chemical burns, chronic dermatitis.
- Cross-contamination of samples: Opening/closing many times → Incorrect test results.
- Environmental pollution: Formaldehyde is released into the air → Affects the surrounding community.

DANGEROUS HABITS

Laboratory staff often manually mix and pour formalin into sample bottles.
→ Potential risk of breakage, chemical contact with hands causing skin burns.
→ Causes respiratory irritation when the concentration of formalin in the air exceeds the safety threshold 4-7 times after performing this operation.
→ **High risk of cancer causing cancer when exposed for a long time.**



OUR SOLUTION: SafeCell



1. Effective preservation:

Medical Polypropylene material helps to preserve samples safely during transportation. Maximum preservation time is 72 hours.

2. Closed system:

One-way valve design with sealed lid. Formalin is only released when the vial lid is completely closed, preventing leakage, contact and evaporation.

3. Outstanding benefits:

Save time preparing samples. Minimizes the risk of chemical exposure due to manual pouring..

SafeCell - "SAFETY INSURANCE" FOR LAB

EASY TO USE



Step 1

Open the white cap of the vial.



Step 2

Turn the cap until you see the formalin flowing down



Step 3

Place the biopsy in the vial



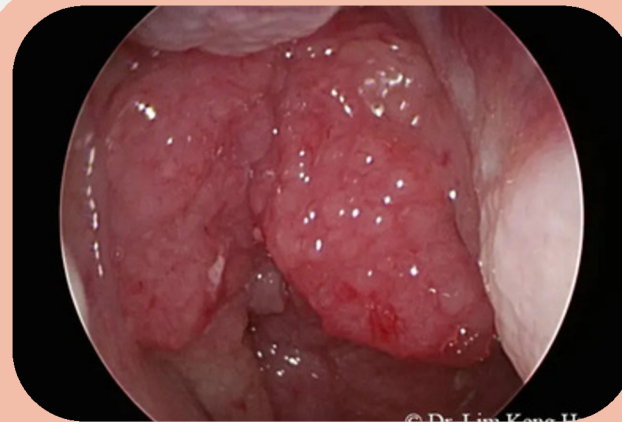
Step 4

After the formalin has flowed down. Tighten the white cap



Step 5

Check the coverage of the biopsy, store the vial in the specified place.



NOTE:

- The product is for in vitro diagnostic purposes only.
- The product is for single use only, not for reuse.
- Only for use by qualified medical staff.
- It is necessary to ensure proper disposal of used formalin to avoid environmental impacts. Do not directly discharge used formalin into groundwater or wastewater.

